

## **BAUR SA**

Corniche 9  
CH-2024 St-Aubin-Sauges  
Switzerland

Tél. +41 (0)32 835 16 55  
Fax +41 (0)32 835 34 69  
E-mail [baurisa@swissonline.ch](mailto:baurisa@swissonline.ch)

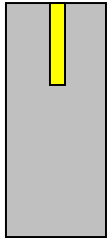
---

# **Central Command Unit (ciblesCom)**

## **Police Version**

### **Description**

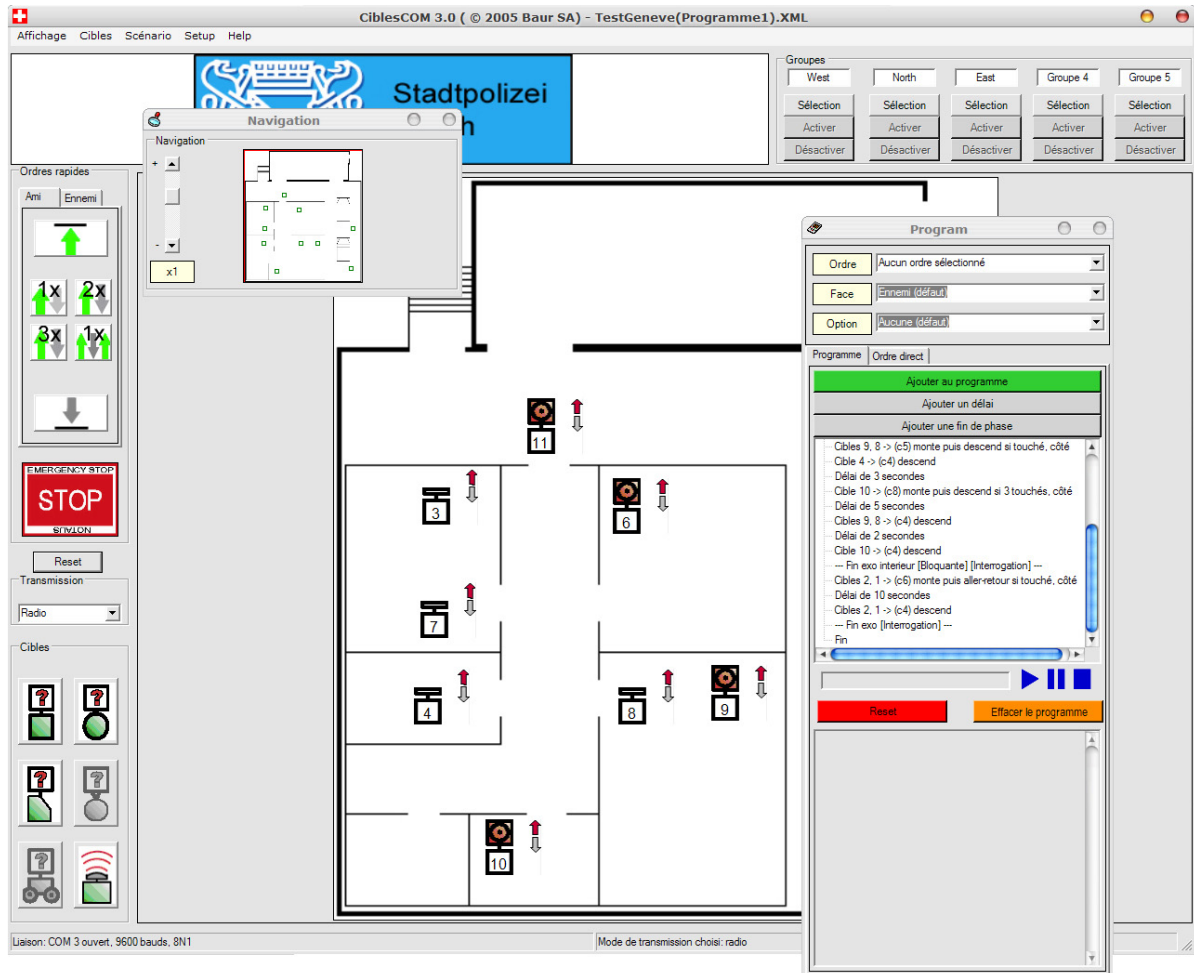
- The **ciblesCom** Multiple Windows User Interface runs on Personal Computers (Microsoft Windows 9x/NT/2000/XP)
  - **ciblesCom** is easy to program and to use. The software relies on a Graphical User Interface that can be easily customized to meet specific user requirements.
  - **ciblesCom** supports the full range of existing target systems, ranging from infantry to tank target systems, mobile or static, as well as their respective accessories.
  - Individual hits data, including timing and position information, can be stored and used for later processing (statistical analysis, after-action review, program sequence control, etc.)
  - The modular concept behind **ciblesCom** guarantees easy integration of specific customer requirements.
  - Target systems are graphically displayed on a map describing the environment. An intuitive icon-based editor allows for simple drag & drop program design.
  - Target systems can be directly controlled (individually or in groups) thanks to their icons and/or specific menus
  - Target systems can be controlled via programs that can include events, phases and screenplays. Programs can be stored, edited and re-used.
  - Information exchange between target system and Central Command Unit can be achieved over radio link (data transmitted in Emitter/ Receiver duplex mode).
  - Information exchange between target system and Central Command Unit can be achieved over a wireless link (data transmitted by wireless LAN, 802.11b protocol)
  - Each target is uniquely identified by its IP address. Specific user-friendly labels can be edited and added to the target display.
  - Several command (target behaviour) and programming modes are available.
  - Each target parameter (IP address, unique ID, display label, radio frequencies, etc.) can be modified from the Central Command Unit (in administrator mode)
  - The real-time status of each target system (battery charge, hit count, time to hit, target image position, etc.) can be monitored from the Central Command Unit.
  - Several Peripheral Command Units can be used simultaneously on top of the Central Command Unit. Peripheral Command Units include Personal Digital Assistants (PDA), Pocket PC, Tablet PC, Radio command unit, etc.
  - **ciblesCom** offers a comprehensive, full-featured On-line help.
  - French, German and English versions of **ciblesCom** are available.
-



# BAUR SA

Corniche 9  
CH-2024 St-Aubin-Sauges  
Switzerland

Tél. +41 (0)32 835 16 55  
Fax +41 (0)32 835 34 69  
E-mail baur**sa**@swissonline.ch



Central Command Unit graphical user interface