

## **BAUR SA**

Corniche 9  
CH-2024 St-Aubin-Sauges  
Switzerland

Tél. +41 (0)32 835 16 55  
Fax +41 (0)32 835 34 69  
E-mail [baurasa@swissonline.ch](mailto:baurasa@swissonline.ch)

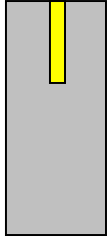
---

# **Central Command Unit (ciblesCom)**

## **Army Version**

### **Description**

- The **ciblesCom** Centralized Command and Programming System runs on Personal Computers (Microsoft Windows 9x/NT/2000/XP) and is divided in 3 modules :
    1. **ciblesCom – Map Editor** module  
edit and manage maps of the working environment
    2. **ciblesCom – Program Editor** module  
edit training programs for later execution during exercise
    3. **ciblesCom – Program Player** module  
execute predefined programs  
and/or control and supervise all target systems and accessories
  - The **ciblesCom** infrastructure is based on WiFi (wireless) technology. The Central Command Unit supports Baur SA target systems that already feature this technology. Conventional radio based control and command units can still be used.
  - **ciblesCom** supports the full range of existing target systems, ranging from infantry to tank target systems, mobile or static, as well as their respective accessories.
  - There is no need to purchase new target systems to fully benefit from the wireless infrastructure - any existing Baur SA target system (AK2/TAA69, ...) can be upgraded.
  - The modular concept behind **ciblesCom** guarantees easy integration of specific customer requirements.
  - **ciblesCom** offers a comprehensive, full-featured On-line help.
  - French, German and English versions of **ciblesCom** are available
-



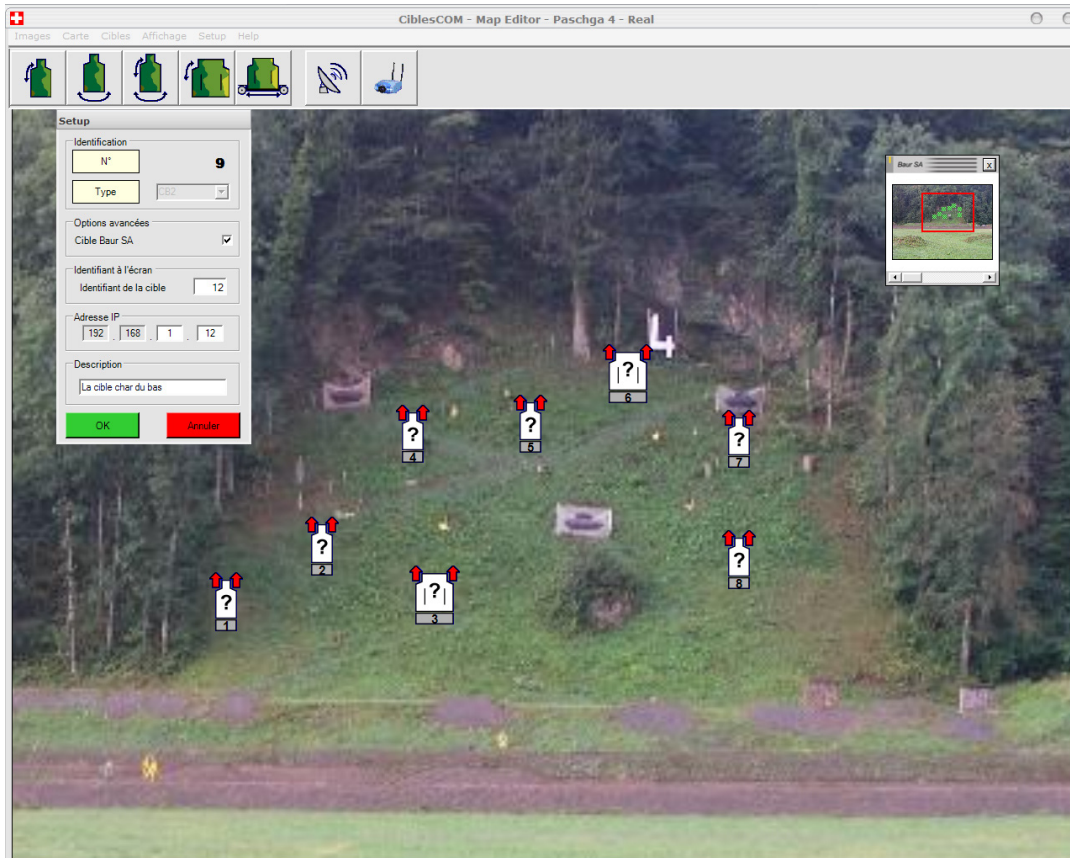
## BAUR SA

Corniche 9  
CH-2024 St-Aubin-Sauges  
Switzerland

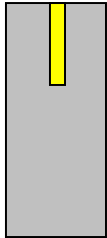
Tél. +41 (0)32 835 16 55  
Fax +41 (0)32 835 34 69  
E-mail baur@swissonline.ch

### ciblesCom – Map Editor module

- The **Map Editor** is used to define maps of the working environment. Every map can be used in an unlimited number of screen plays (exercises).
- The **Map Editor** is meant to be used by trained personnel (shooting range administrators, instructors, etc.) and is password-protected to that effect to prevent unauthorized modifications of the training scenario by unaccredited users.
- The **Map Editor** is a stand-alone module, and does not require other software modules to run. It can be installed and run on any Windows-based computer.



*the Map Editor software module*



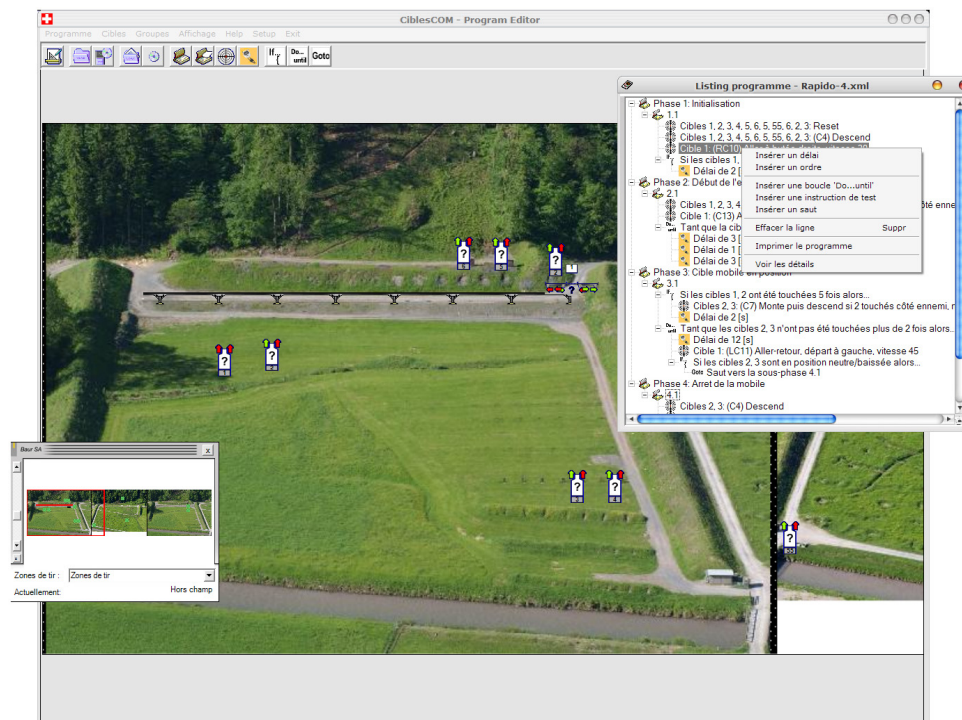
## BAUR SA

Corniche 9  
CH-2024 St-Aubin-Sauges  
Switzerland

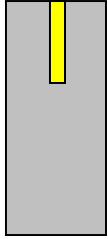
Tél. +41 (0)32 835 16 55  
Fax +41 (0)32 835 34 69  
E-mail baur@swissonline.ch

### ciblesCom – Program Editor module

- The **Program Editor** module is used to create training programs (or *exercices*) based on one or several maps generated with the **Map Editor**
- The **Program Editor** is meant to be used by trained personnel (shooting range administrators, instructors, etc.) and is password-protected to that effect to prevent unauthorized modifications of the training scenario by unaccredited users.
- Training programs are divided in phases and sub-phases, allowing for well-defined and accurate exercise generation and results evaluation.
- The **Program Editor** defines an easy-to-use programming language similar to natural language (*If target X is down then ...*), making it possible to use such functionalities as:
  - *direct commands to the target systems*
  - *time delays*
  - *if... then... | do... while... | goto...*
- The **Program Editor** is a stand-alone module, and does not require other software modules to run. It can be installed and run on any Windows-based computer.



*the Program Editor software module*



## **BAUR SA**

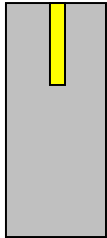
Corniche 9  
CH-2024 St-Aubin-Sauges  
Switzerland

Tél. +41 (0)32 835 16 55  
Fax +41 (0)32 835 34 69  
E-mail [baurasa@swissonline.ch](mailto:baurasa@swissonline.ch)

---

### **ciblesCom – Program Player module**

- the **Program Player** module provides a unified user-interface for :
    - *decoding and execution of the training programs generated with the **Program Editor***
    - *direct control of single or grouped targets combining multiple behaviours*
    - *remote (wireless) video surveillance of the exercise area*
  - The **Program Player** runs on any Windows-based laptop or computer. To maximize user comfort, Baur SA recommends using a dual-monitor setup.
  - Unlike the other modules, the **Program Player** is not password protected and can be used by unprivileged users. A short introduction by a trained operator allows users to rapidly use the program to its full potential. Advanced settings are password-protected and available only to designated system administrators.
  - Data exchange between target systems and the Central Command Unit is performed over Wireless Local Area Network (WLAN):
    - Wireless LAN protocol 802.11b
    - WiFi coverage can be extended with repeaters (battery-powered or running on 230V AC)
  - Each target is uniquely identified by its IP address. Specific user-friendly labels can be edited and added the target display.
  - Each target parameter (IP address, unique ID, display label, radio frequencies, etc.) can be modified from the Central Command Unit (in administrator mode)
  - The real-time status of each target system (battery charge, hit count, time to hit, target image position, etc.) can be monitored from the Central Command Unit.
  - Several Peripheral Command Units can be used simultaneously on top of the Central Command Unit. Peripheral Command Units include Personal Digital Assistants (PDA), Pocket PC, Tablet PC, Radio command unit, etc.
  - The training program protocol is readily available at the end of each exercise and provides valuable feedback on the performance of each participant.
-



# BAUR SA

Corniche 9  
CH-2024 St-Aubin-Sauges  
Switzerland

Tél. +41 (0)32 835 16 55  
Fax +41 (0)32 835 34 69  
E-mail baur@swissonline.ch

The screenshot displays the 'CiblesCOM - Program Player - Test Paschga4 (12-04) by S.Dey' application. The main window shows a target field with numbered targets (e.g., 63, 45, 46, 47, 48, 16, 17, 48, 19, 20, 64, 61, 42, 4, 43, 6, 44, 41, 62, 2) overlaid on a video feed. A control panel at the bottom left includes a chronometer showing '0h0m0.0', a 'STOP' button, and a 'Historique' (History) panel. A program tree on the left lists phases and target actions, such as 'Phase 1: Initialisation' and 'Phase 2: Début de l'exercice'. A secondary window titled 'Baur SA' shows a 'Description' of 'La 2eme caméra qui voit tout...' and a 'Live' video feed of a building.

the Program Player user interface